



# Iowa Ag News – Cattle on Feed

Iowa Field Office · 210 Walnut Street Ste 833 · Des Moines IA 50309 · (515) 284-4340 · (800) 772-0825  
fax (515) 284-4342 or (800) 719-1794 · [www.nass.usda.gov/ia](http://www.nass.usda.gov/ia)

Cooperating with the Iowa Department of Agriculture and Land Stewardship

January 20, 2012

Media Contact: Greg Thessen

**Cattle and calves on feed** for slaughter market in Iowa for all feedlots totaled 1.30 million head on January 1, 2011, according to the USDA, National Agricultural Statistics Service, Iowa Field Office. The inventory was up 1 percent from December 1, 2011, but down 6 percent from January 1, 2011. Feedlots with a capacity greater than 1,000 head had 620,000 head on feed, up 2 percent from last month and down 3 percent from last year. Feedlots with a capacity less than 1,000 head had 680,000 head on feed, unchanged from last month but down 8 percent from last year.

**Placements** during December totaled 172,000 head, a decrease of 44 percent from last month and down 29 percent from last year. Feedlots with a capacity greater than 1,000 head placed 77,000 head, down 46 percent from last month and down 17 percent from last year. Feedlots with a capacity less than 1,000 head placed 95,000 head. This is down 42 percent from last month and down 37 percent from last year.

**Marketings** for December were 153,000 head, down 19 percent from last month but up 9 percent from last year. Feedlots with a capacity greater than 1,000 head marketed 63,000 head, down 37 percent from last month and down 21 percent from last year. Feedlots with a capacity less than 1,000 head marketed 90,000 head, unchanged from last month but up 50 percent from last year.

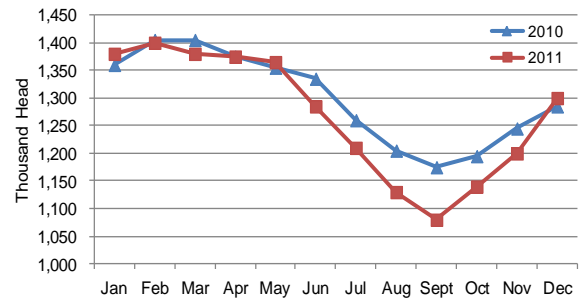
**Other disappearance** totaled 9,000 head.

## All Cattle on Feed, Iowa

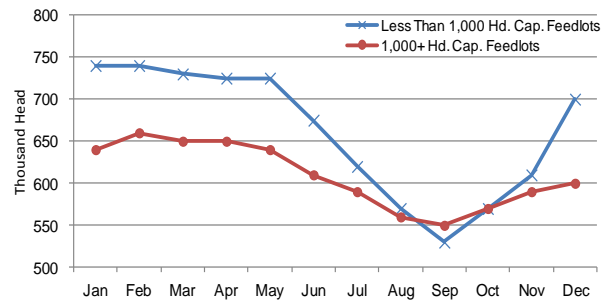
Item	Lots 1,000+ Head	Lots Less than 1,000 Head	All Lots
	(1,000 Head)	(1,000 Head)	(1,000 Head)
Cattle on Feed, December 1, 2011 .....	610	680 <sup>1</sup>	1,290 <sup>1</sup>
December Placements .....	77	95	172
December Marketings .....	63	90	153
December Other Disappearance .....	4	5	9
Cattle on Feed, January 1, 2012 .....	620	680	1,300

<sup>1</sup> Revised from previous month.

**Cattle on Feed, Inventory on all Feedlots, Iowa: 2010-2011**



**Cattle on Feed, Inventory by Feedlot Capacity, Iowa: 2011**



## Cattle on Feed: Number on Feed, Placements, Marketings, and Other Disappearance by Month, 1,000+ Capacity Feedlots

[Cattle and calves on feed are animals for slaughter market being fed a ration of grain or other concentrates and are expected to produce a carcass that will grade select or better.]

State	Cattle on Feed January 1			Placements during December			Marketings during December			December Disappearance other than Slaughter <sup>1</sup>		
	2011	2012	'12 as % of '11	2010	2011	'11 as % of '10	2010	2011	'11 as % of '10	2010	2011	'11 as % of '10
	(1,000 Head)	(1,000 Head)	(Percent)	(1,000 Head)	(1,000 Head)	(Percent)	(1,000 Head)	(1,000 Head)	(Percent)	(1,000 Head)	(1,000 Head)	(Percent)
Arizona .....	258	279	108	36	26	72	26	36	138	1	1	100
California .....	470	510	109	61	61	100	57	52	91	4	4	100
Colorado .....	1,080	1,150	106	160	170	106	165	170	103	5	10	200
Idaho .....	240	230	96	42	36	86	35	40	114	2	1	50
<b>Iowa .....</b>	<b>640</b>	<b>620</b>	<b>97</b>	<b>93</b>	<b>77</b>	<b>83</b>	<b>80</b>	<b>63</b>	<b>79</b>	<b>3</b>	<b>4</b>	<b>133</b>
Kansas .....	2,280	2,250	99	410	350	85	480	445	93	10	15	150
Nebraska .....	2,430	2,550	105	380	380	100	400	380	95	10	10	100
Oklahoma .....	375	375	100	55	45	82	58	52	90	2	3	150
South Dakota ..	260	260	100	45	37	82	39	37	95	1	5	500
Texas .....	2,840	2,940	104	420	400	95	400	430	108	20	30	150
Washington ....	209	232	111	36	44	122	39	45	115	2	3	150
Other States ...	432	465	108	51	57	112	51	46	90	5	5	100
United States .	11,514	11,861	103	1,789	1,683	94	1,830	1,796	98	65	91	140

<sup>1</sup>Includes death loss, movement from feedlots to pasture, and shipments to other feedlots for further feeding.

## Cattle on Feed: Number on Feed by Class, 1,000+ Capacity Feedlots by Quarter, State, and United States, 2011-2012

State	Steers & Steer Calves			Heifers & Heifer Calves			Cows & Bulls		
	January 1, 2011	October 1, 2011	January 1, 2012	January 1, 2011	October 1, 2011	January 1, 2012	January 1, 2011	October 1, 2011	January 1, 2012
	(1,000 Head)	(1,000 Head)	(1,000 Head)	(1,000 Head)	(1,000 Head)	(1,000 Head)	(1,000 Head)	(1,000 Head)	(1,000 Head)
Arizona .....	255	277	276	3	3	3	0	0	0
California .....	405	425	440	65	63	69	0	2	1
Colorado .....	710	730	745	365	335	400	5	5	5
Idaho .....	116	136	123	108	82	106	16	2	1
<b>Iowa .....</b>	<b>440</b>	<b>390</b>	<b>450</b>	<b>199</b>	<b>179</b>	<b>170</b>	<b>1</b>	<b>1</b>	<b>0</b>
Kansas .....	1,220	1,220	1,160	1,055	1,090	1,085	5	10	5
Nebraska .....	1,520	1,290	1,530	895	905	980	15	15	40
Oklahoma .....	210	205	215	165	165	160	0	0	0
South Dakota ..	129	114	131	107	81	101	24	10	28
Texas .....	1,750	1,750	1,730	1,089	1,199	1,209	1	1	1
Washington ....	130	123	150	71	83	80	8	2	2
Other States ...	293	285	331	137	133	133	2	1	1
United States .	7,178	6,945	7,281	4,259	4,318	4,496	77	49	84

### United States Cattle on Feed

**Cattle and calves on feed** for slaughter market in the United States for feedlots with capacity of 1,000 or more head totaled 11.9 million head on January 1, 2012. The inventory was 3 percent above January 1, 2011. The inventory included 7.28 million steers and steer calves, up 1 percent from the previous year. This group accounted for 61 percent of the total inventory. Heifers and heifer calves accounted for 4.50 million head, up 6 percent from 2011.

**Placements** in feedlots during December totaled 1.68 million, 6 percent below 2010. Net placements were 1.59 million head. During December, placements of cattle and calves weighing less than 600 pounds were 550,000, 600-699 pounds were 390,000, 700-799 pounds were 365,000, and 800 pounds and greater were 378,000. **Marketings** of fed cattle during December totaled 1.80 million, 2 percent below 2010. **Other disappearance** totaled 91,000 during December, 40 percent above 2010.